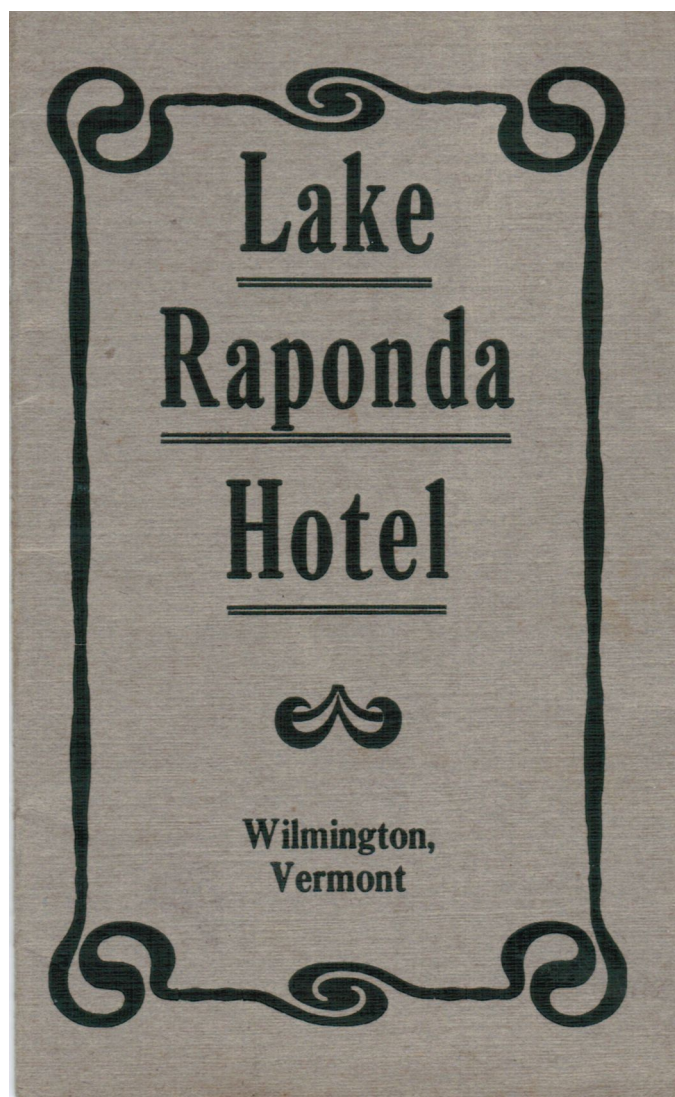
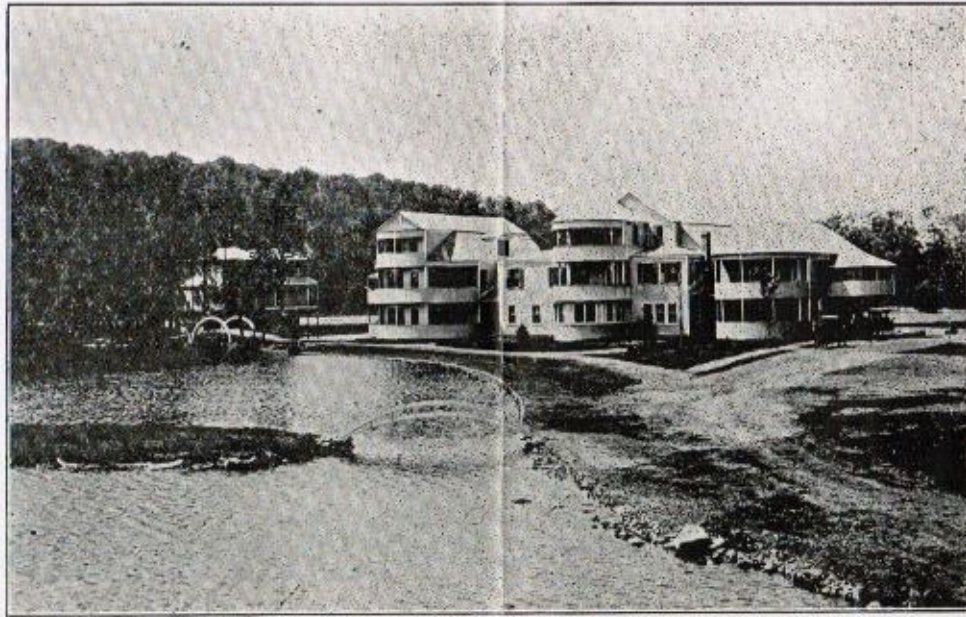


The Lake Raponda Hotel Brochure

A handy pocket guide

Thank you, Larry Chase, for preserving this.

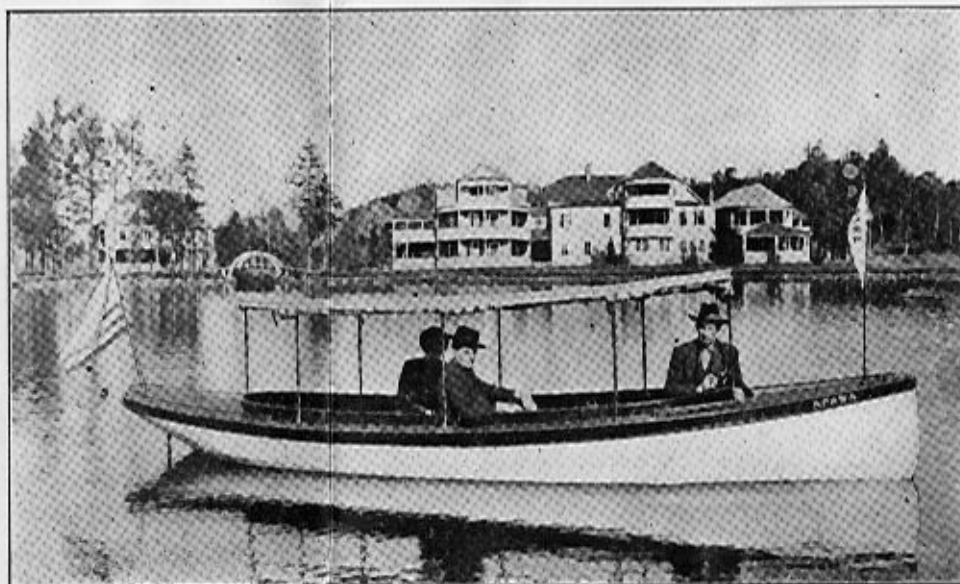




THE RAPONDA HOUSE

WILL OPEN FOR ITS SECOND SEASON July 1st. Those who intend to spend their vacations in the mountains will find it to their advantage both from a scenic standpoint and in the matter of health, to come to the Raponda House. It is situated on a point jutting abruptly into the lake, all rooms are large and airy and all overlook

**THE HOTEL
LAUNCH**



the lake. Rooms are finished in white and are furnished for comfort, many having private piazzas. The Hotel has accommodations for 65 guests, is situated in the heart of the Green Mountains of Southern Vermont, four miles from Wilmington, the nearest railroad station, with an automobile meeting all trains.

Scenically, the surroundings combine country, mountain and lake. Mountain paths, boating, fishing, canoeing, tennis, croquet and dancing,

auto-mobiling, driving, all appeal to the vacation guest in their separate ways. The Hotel has wide, airy piazzas with excellent views of the lake and surrounding mountains, all modern improvements, electric lights, baths, toilets, etc.

Fresh country produce, raised in the Hotel's own gardens, is provided daily. The kitchen, table service and cuisine generally are of excellent quality and every effort is made to give the utmost satisfaction to guests.

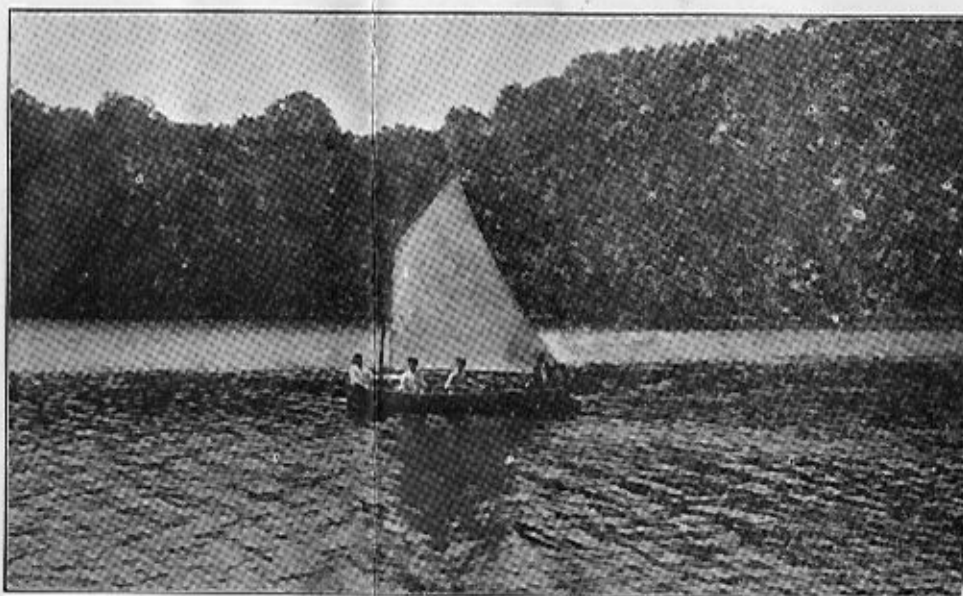
WATER

All water used in the kitchen and for drinking purposes comes from a spring of pure water, well protected from pollution.

AMUSEMENTS

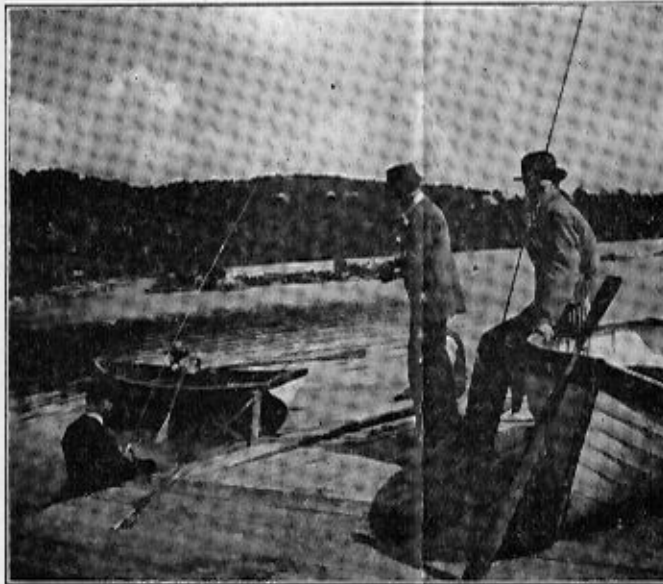
Lake Raponda has all the usual attractions of a lake resort, coupled with others found in no other place than in the heart of the Green Mountains of Southern Vermont. The lake nestles in the heart of a hilly region abounding in beautiful walks and drives. There is fine fishing, bathing, boating and canoeing. The Hotel is equipped with a pool table, has a fine lawn tennis court and a gravel croquet ground. Picnic grounds and attractive spots to which all-day excursions may be made are found in abundance within easy walking or driving distance of the lake and fine groves of sugar maples and coniferous trees lend an added attraction to a vacation spot unexcelled in New England.

**SAILING ON
THE LAKE**



BOATING

The waters of the lake are always placid and boating or canoeing affords not only a pleasant pastime but is perfectly safe. The Hotel's boat livery consists of steel boats, chosen for their stability and safety, each being of life boat construction with air tanks bow and stern, making them non-sinkable. There is also a motor boat for the use of parties. The boats may be had by the hour, day or week at a moderate



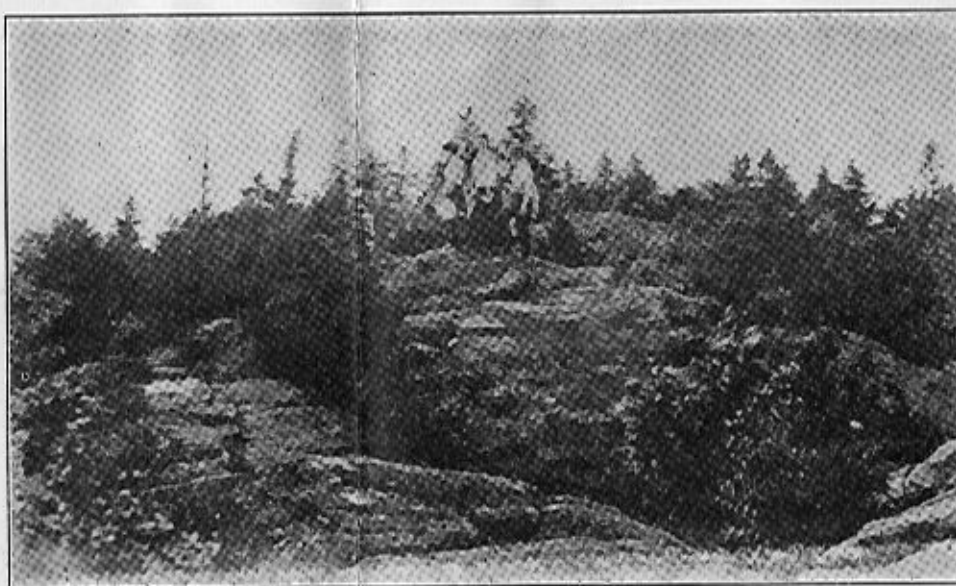
**GOOD FISHING
AT THE
HOTEL DOCK**

rental.

BATHING

The lake bottom near the Hotel slopes gradually into deep water and as there are no currents bathing is perfectly safe, even for small children. This is an ideal place for those learning to swim. There is no charge for bathing accommodations where bathers supply their own suits.

**SUMMIT OF
MOUNT
HAYSTACK**

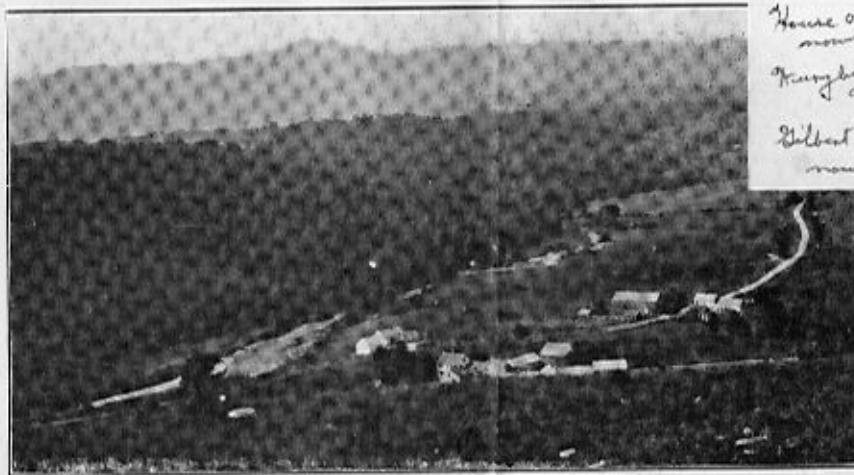


FISHING

There is good fishing in the lake, where some very nice catches of black bass, pickerel and yellow perch have been made frequently. All of the streams of the surrounding countryside are well stocked with brook trout.

POINTS OF INTEREST

Mount Haystack with an elevation of 3600 feet, is the highest point



Lower Rd. P. 100 H
 Greenfield River
 House on left, Old sawmill
 now log stand & mill
 Kung's house, Hunt & Fish house
 on Stone Hill Rd.
 Gilbert House & Barn
 now near City & Sancer

**ON THE
 ROAD TO
 LAKE RAPONDA**

in this vicinity. From the summit there is unfolded a splendid view in all directions. Mountain ranges in New Hampshire, Massachusetts and Vermont are plainly visible to the naked eye. Higley hill, rising 2300 feet above sea level, affords one of the most beautiful views in southern Vermont, winding valleys, tree clad slopes and white farmhouses, looking for all the world like doll's houses, dotting the landscape and giving to it a picturesqueness not to be excelled. Mountain ranges, unfolding one after the other, stretch away into the hazy distance, until, at the limit of vision, a clear day discloses the outlines of the White mountains. From

Hogback, as it is called, with its elevation of 2100 feet, crossed at its extreme height by the Wilmington-Brattleboro road, the mountain peaks of Massachusetts are seen to the south.

Turning from the glory of the hills, a trip to Whitingham brings the visitor to the birthplace of Brigham Young, founder of Mormonism, near Lake Sadawga. The lake itself is 1400 feet above sea level and its greatest attraction is the floating island, about 75 acres of land covered with trees and shrubbery and floating lazily on the placid bosom of the lake. There are a number of summer cottages here as well as a camp for girls, the latter open two months during the summer.

Lake Raponda is tucked away up among the hills of Southern Vermont. It is a beautiful body of pure spring water, nearly two miles long and one-half mile in width, its bottom on clear days being plainly visible through the crystal waters. The shores are thickly covered with spruce, pine, balsam and hard wood, affording not only cool retreats for idle hours but a prolific source of interest and study for the lover of nature in all her moods.

Wilmington is our railroad station and is about four miles from the Hotel. It is a progressive town, has seven stores, four churches, public library, a fine hotel, high school, several factories and a large pulp mill, one of the latest in its manufacturing processes in New England. It has electric lights and one of the best water systems in the state, springs high up on the side of Mount Haystack furnishing a high pressure



**DOWN THE
LAKE—
HOTEL IN
DISTANCE**

supply.

Passing over good roads, bordered on either side with beautiful farms, the growing crops affording a pleasant contrast to the deeper green of the hillsides, pastures with herds of grazing cattle and farm-houses here and there beside the road, we turn into the Raponda road, where the sweet odors of spruce, pine and balsam strike the traveler in all their fragrance. For a short distance we ride beneath an arch of

**ONE OF OUR
MANY TROUT
STREAMS**



trees, and then, rounding a curve in the road, Lake Rapenda, nestling in the hills and reflecting the glories of the summer skies, bursts upon the vision. It is the place for you to spend your vacation.

Garage in connection.

Rates: \$15.00 to \$20.00 per week during July and August.

V. L. Adams, - - - - - - Proprietor

There are many attractive spots within a comparatively short distance of Wilmington, some of them easily reached on foot or by team, while others necessitate the use of an automobile to reach them in comfort. A short list of some of these spots, of more than passing interest, is appended.

	Elevation	Miles
Higley Hill	2300 ft.	2½
Hogback Mt.	2100 ft.	4
Mt. Haystack	3600 ft.	7
Cold Brook Road		4
Dover and The Handle		6

Stratton Mt.	17
Searsburg Mt.	13
Mohawk Trail	24
Brattleboro	20
Wilmington	4
Somerset Dam and Reservoir	20
Greenfield	29
North Adams	26
Sadawga Lake	7
Williamstown and Williams College	31
Bennington	26
Auto, walking and carriage trips planned for guests on request.	