

Waterbody: Lake Raconda

Town of: Wilmington

Lake Association: Lake Raconda Association

Project Type: Greeter Program

Contact Name and Email Address: Cory Ross, ross.wcnrcd@gmail.com

ANC Grant Award Amount: \$5,230

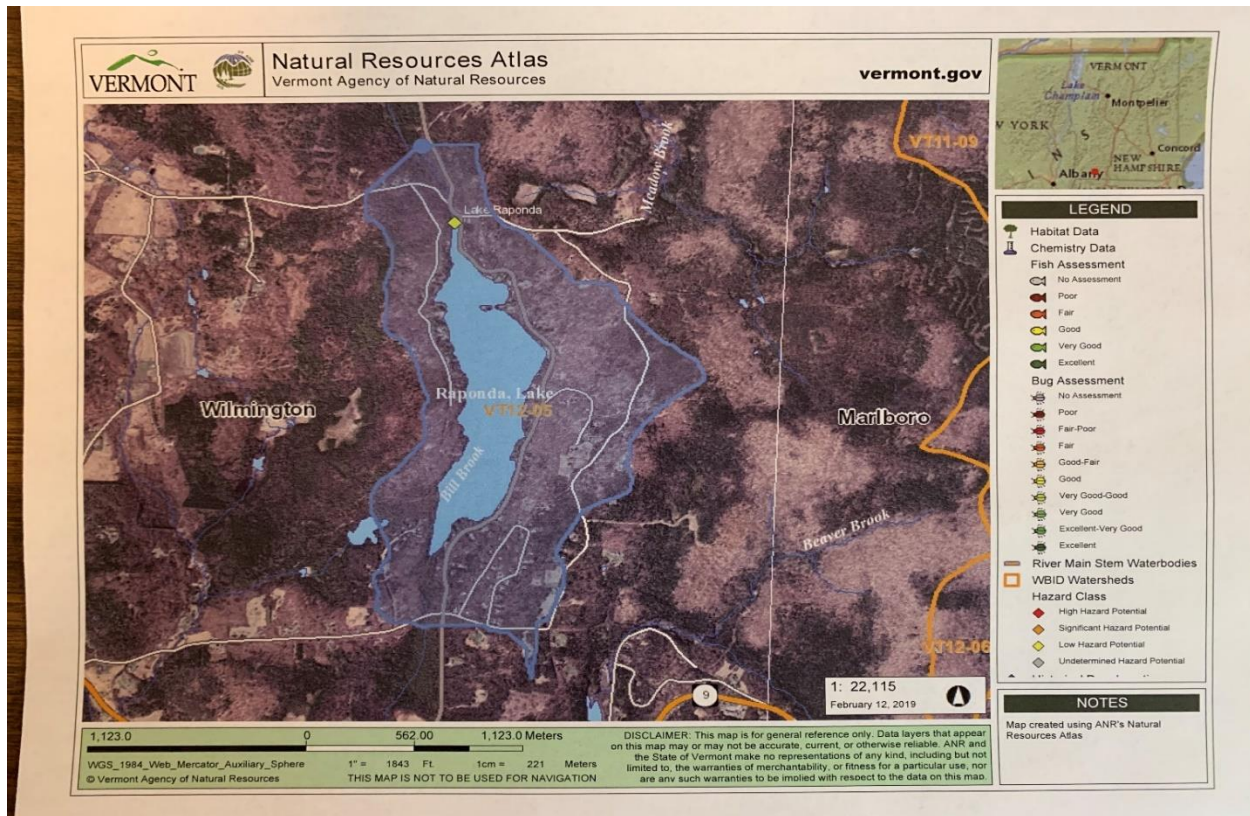
Total Project Cost: \$13,084

Lake Raconda Greeter Program 2021 Project Completion Report

Program Description:

Located in Wilmington, VT, Lake Raconda is a 121-acre spring fed, warm water lake that is used by Wilmington residents, property owners, their guests and visitors for a variety of recreational purposes. Lake Raconda is publicly accessible via a State boat launch area at the northern end of the lake as well as via the Town of Wilmington's swimming, beach, and picnic area on the lake's east side. Although the beach is restricted to Town of Wilmington residents, property owners and their guest, the State's boat launch is open to the general public; which include neighboring communities like Whitingham that have recorded invasive species in Lake Sadagwa; as well as boaters from all of Vermont and elsewhere.

Raconda is at risk for infestation by invasive species that include—but are not limited to—Eurasian watermilfoil, Variable watermilfoil, Water chestnut, Curly-leaf pondweed, Hydrilla, Zebra mussels, Asian clams, and Spiny water flea. The Lake Raconda Association (LRA: <http://raconda.org>) is a group of Wilmington residents and property owners with homes on or near the lake. The LRA partnered with the Town of Wilmington and the Windham County Natural Resources Conservation District to implement a greeter program for the 2021 season. This is the fifth year that the program has operated, and the second year that the conservation district has served in an administrative capacity. The goal of the program continues to be protecting Lake Raconda from aquatic invasive species by: 1) Educating the public and the boats that could potentially introduce invasive species; and 2) Monitoring, gathering data, and inspecting boats entering Lake Raconda.



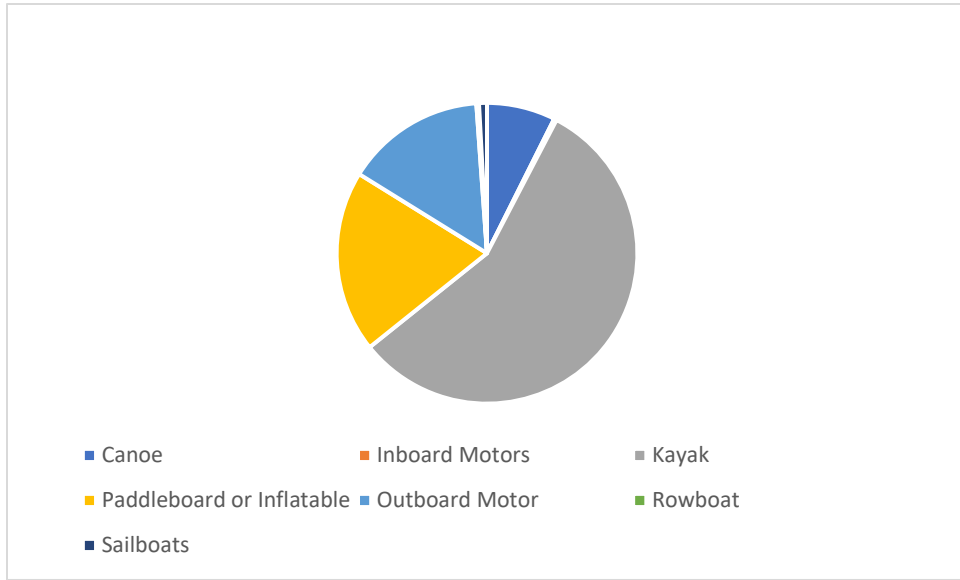
The 2021 Lake Raponda Greeter Season was staffed with paid greeters from Friday, May 28 until Monday, September 13th. Paid greeters were present all days except Tuesdays and Wednesdays throughout the season. The program utilized two paid greeters for the 2021 season, which allowed for greater scheduling flexibility. Members of the LRA also contributed at least 91.5 hours of volunteer greeting throughout the 2021 season.

Paid and volunteer greeters processed 705 watercraft launches over the course of 618.5 hours in the 2021 season. This represented a decline of ~27% in launches but an increase of ~13% in staffed hours. Happily, no invasive species were encountered during inspections.

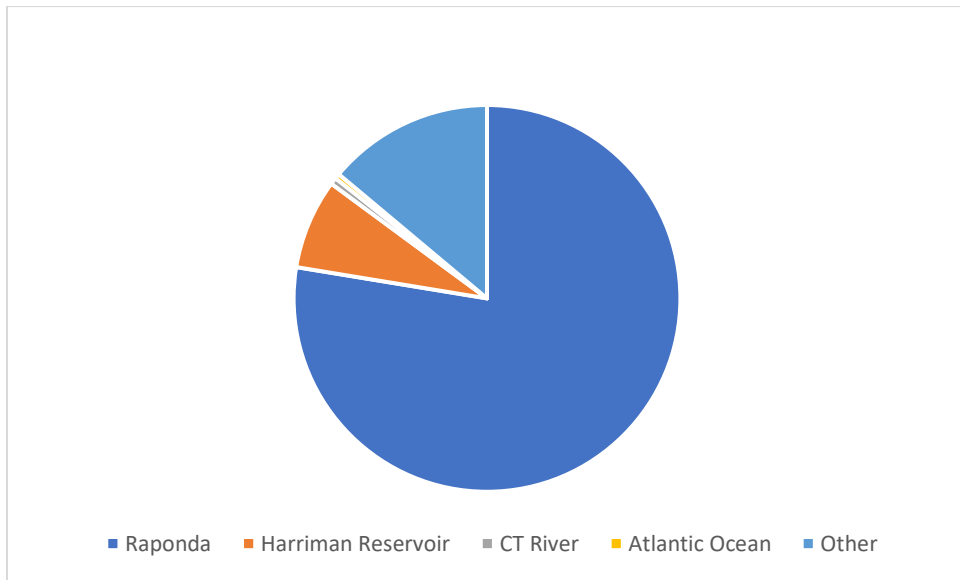
Program Challenges

The primary challenge the Lake Raponda program encountered for the 2021 season was an unusually wet summer season. Many greeter shifts were shortened or cancelled altogether by rainy weather. This was a hardship for the paid greeters who are not paid when they are not staffing the boat launch. This may result in some of our paid greeters seeking alternative, more stable employment in future seasons. It would be worthwhile to establish work alternatives that support more consistent work schedules in the future.

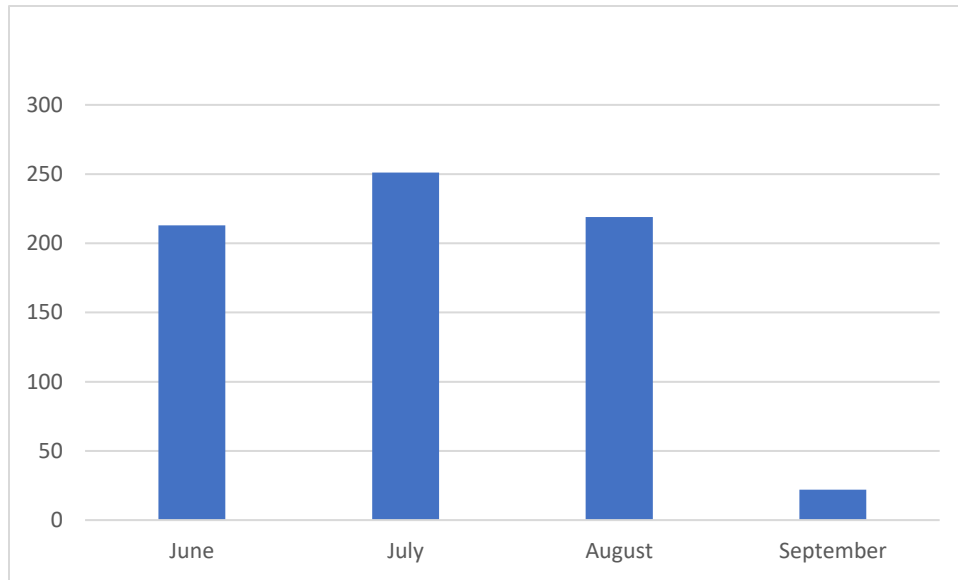
Lake Raponda 2021 Launch by Watercraft Type



Lake Raponda Waterbody of Last Launch



Boaters by Month



Month Number of Inspections

June	213
July	251
August	219
September	22

Funding	2021	2020	2019
Aquatic Nuisance Control Grant-in-aid Grant	\$5,230	\$5,508.50	\$5,876.00
Lake Raponda Association	\$3,815	\$1912.48	\$1,763.05
1% Local Option Tax Fund	\$1,900	\$500	\$1,763.05
Total Funds	\$10,945	\$7,920.98	\$9,402.10
Hard Cost	\$10,951	\$7,920.98	\$9,402.10
In-Kind	\$2132	\$5686.55	\$4,771.60

Total

\$13,083.00

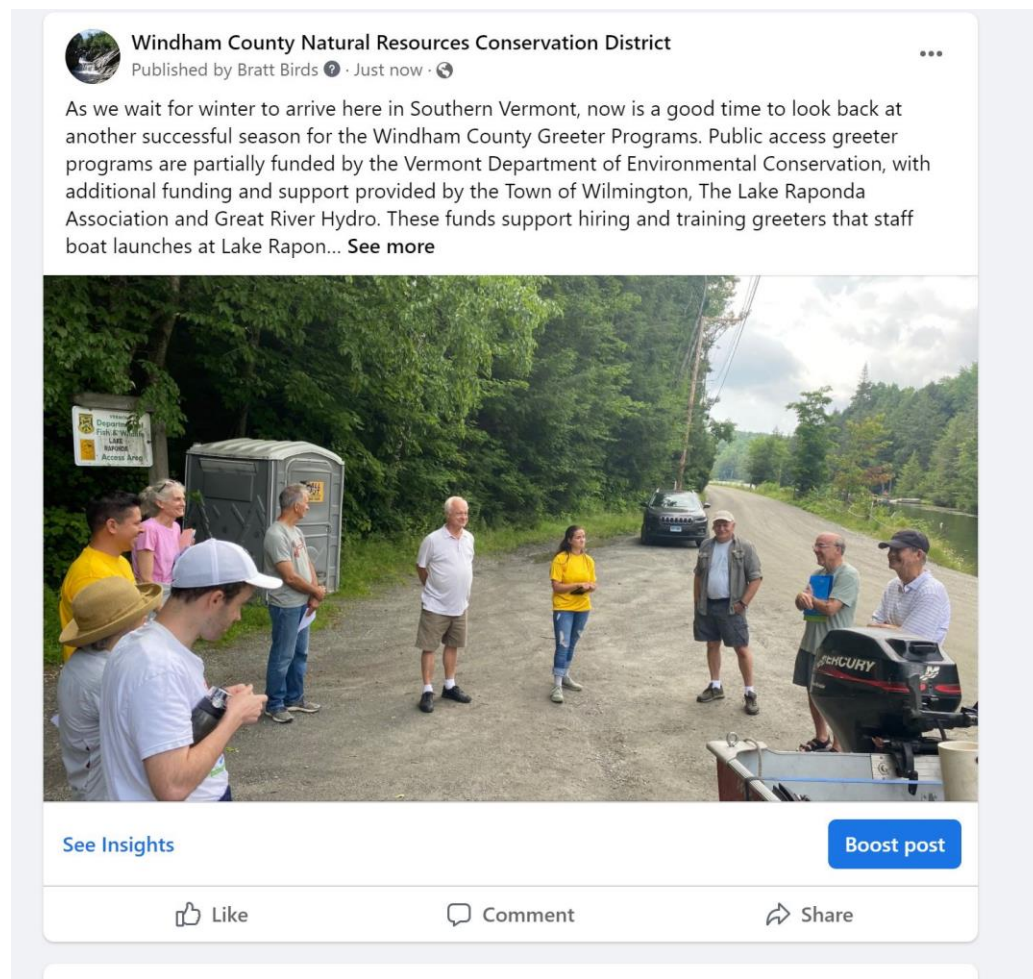
\$13,607.53

\$14,173.70

Major Successes

1. Thanks to the financial and volunteer support of the Lake Raconda Association we were able to provide coverage throughout the season on most days, despite the reduction in state funding. This is a testament to the LRA and their commitment to protecting the watershed. Increased financial support from the Town of Wilmington was crucial to the continued success of the program as well.
2. Boaters were generally very positive and supportive of the greeter program at Lake Raconda. We did not have many challenges with compliance. This speaks to the important work that the greeter program has done over the past few years to build a relationship with the boating community.

Public Outreach Example



The image shows a Facebook post from the Windham County Natural Resources Conservation District. The post text reads: "As we wait for winter to arrive here in Southern Vermont, now is a good time to look back at another successful season for the Windham County Greeter Programs. Public access greeter programs are partially funded by the Vermont Department of Environmental Conservation, with additional funding and support provided by the Town of Wilmington, The Lake Raconda Association and Great River Hydro. These funds support hiring and training greeters that staff boat launches at Lake Raconda... See more". Below the text is a photograph of a group of about ten people standing on a dirt road next to a boat launch. A portable toilet and a car are visible in the background. The boat in the foreground has a Mercury outboard motor. The Facebook interface includes a "See Insights" button, a "Boost post" button, and "Like", "Comment", and "Share" options.

Grant Project Budget Expenses	Column A Actual Expenses	Column B Actual Volunteer/In-Kind	Column C Expenses + Volunteer/In-Kind
A. Personnel:			0
Administration (Rate \$ _50_ total hrs 12.25 _____) (6 hours Gretchen Havrelul	613	300	913
Coordination (Rate \$ _50_ total hrs 12 _____)	600		600
Greeters (Rate \$ _15_ total paid hrs 527 _____), (91.5 hrs volunteered)	7905	1373	9278
Monitor (Rate \$ _____ total hrs _____)	0	0	0
Hand puller (Rate \$ _____ total hrs _____)	0		0
Other: _____ (Rate \$ _____ total hrs _____)	0		0
Bookeeping (Rate \$50) X 4 Hrs	200		200
			0
			0
Total Personnel	9318	1673	10990
			0
B. Total Fringe Costs (Insurance, etc.)	715		715
			0
C. Mileage (Miles _36.4 miles x .56/mile	20		20
			0
D. Equipment / Supplies TOTAL	898	460	1358
			0
Portable Toilet		460	460
2 iPads, cases, battery packs	898		898
			0
E. Contractors			0
Consultant (Rate \$ _____ total hrs _____)			0
Contractors (Rate \$ _____ total hrs _____)			0
Total Contractors	0		0
			0
F. Miscellaneous			0
			0
			0
			0
			0
Total Miscellaneous	0		0
			0
			0
			0
G. TOTAL EXPENDITURES	10951	2132	13084
H. Cash Contributions		5715	
Lake Raponda Association		3815	
Town of Wilmington		1900	
I. Total Match (Cash+Volunteer/In-Kind)		7848	



**ATTACHMENT F – Lake Raponda
Form 430-M Volunteer/In-Kind/Cash Match Documentation**

Volunteer or Donated Professional Services. Volunteer services (non-skilled labor), and work performed by individuals under the age of 18 will be valued at the State of Vermont’s minimum wage rate. Donated professional services are defined as services provided at no cost to the grantee by firms or individuals possessing specialized or expert skills and knowledge to perform professional services or operating specialized equipment related to all or part of the approved scope of work as stated in the Grant Agreement. The VT Dept. of Environmental Conservation may request written documentation in support of the listed professional or equipment services. All volunteer or donated professional services must occur during the Grant Agreement period.

Name of Person or Organization Volunteering Service	Summary Description of Tasks Provided	Date or Date Range	# of Volunteer Hours	Billable Hourly Rate	Miles Traveled	Miles Traveled X Federal Standard Mileage Rates**	Total Donated Value (Hours X Rate + Mileage Cost)
Gretchen Havreluk, Town of Wilmington	Kick-off Meeting with Cory & LRA, Opening of Greeter Shack, meeting the greeters, check in regarding greeters, email communication, closing up of greeter shack, and close-out meeting with Cory & LRA	5/12-9/18	6	50			\$300
Town of Wilmington	Portable Toilet for Access	5/20-9/6				\$0	\$459.93
Lake Raponda Association	Volunteer Greeter Hours by LRA members	5/28-9/3	91.5	15		\$0	\$1,372.50
						Total	\$2,132.43

** 2021 Federal Standard Mileage Rate is \$0.56/mile driven.

In-Kind Costs. This section summarizes the grantee's in-kind equipment, supplies and/or personnel costs of staff for services and labor to perform part of the approved scope of work as stated in Grant Agreement.

	Salary	
	Indirect Charges	
	Mileage	
	Other Expenses	
	Total	\$0

Cash. This section summarizes actual cash paid by the grantee for a service or product related to part of the approved scope of work as stated in the Grant Agreement. This includes any funds that were donated to the grantee to off-set the costs of a specific item.

	Town of Wilmington Cash Contribution	\$1,900
	Lake Raponda Association	\$3815
	<u>Total</u>	\$5,715
Total/Cumulative In-Kind and Cash Match		<u>Total</u> \$7,847.43

*Submit Form 430-M in excel format with Form 430 (in PDF) via email. Columns G and H contain formulas that auto-calculate totals.